

JUN 5 - 11, 2023

The Queens luxury real estate market, defined as all properties priced \$1M and above, saw 17 contracts signed this week, made up of 6 condos, and 11 houses. The previous week saw 10 deals. For more information or data, please reach out to a Compass agent.

\$1,630,883

Average Asking Price

\$1,468,000

Median Asking Price

\$1,053

Average PPSF

3%

Average Discount

\$27,725,000

Total Volume

88

Average Days On Market

144-31 South Drive in Whitestone entered contract this week, with a last asking price of \$2,999,000. This custom-built, modern home spans 3,570 square feet with 4 beds and 4 full baths. It features a chef's kitchen with high-end appliances and quartzite countertops, wood floors and radiant heating throughout, a family room with fireplace, a backyard with in-ground pool/jacuzzi, a central vacuum system, and much more.

Also signed this week was 69-33 Groton Street in Forest Hills, with a last asking price of \$2,395,000. Originally built in 1930, this house spans 3,602 square feet with 4 beds and 3 full baths. It features a recent full renovation, high ceilings, recessed lighting, hardwood floors, a sunroom entry with stone tile and fireplace, an open kitchen with custom cabinetry, a large primary bedroom with private terrace, a wide driveway and two-car garage, and much more.

6

Condo Deal(s)

0

Co-op Deal(s)

11

Townhouse Deal(s)

\$1,527,500

Average Asking Price

\$0

Average Asking Price

\$1,687,273

Average Asking Price

\$1,500,000

Median Asking Price

\$0

Median Asking Price

\$1,468,000

Median Asking Price

\$1,538

Average PPSF

N/A

Average PPSF

\$730

Average PPSF

1,004

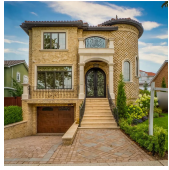
Average SqFt

N/A

Average SqFt

2,442

Average SqFt



144-31 SOUTH DR

Type	Townhouse	Status	Contract
SqFt	3,570	Beds	4
PPSF	\$840	Fees	\$1,302

Whitestone

Ask	\$2,999,000
Baths	4.5
DOM	100

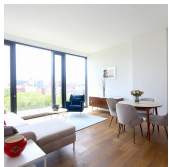


69-33 GROTON ST

Type	Townhouse	Status	Contract
SqFt	3,602	Beds	4
PPSF	\$665	Fees	\$1,040

Forest Hills

Ask	\$2,395,000
Baths	3
DOM	77



21-30 44 DR #7K

Type	Condo	Status	Contract
SqFt	1,089	Beds	2
PPSF	\$1,607	Fees	\$2,517

Hunters Point

Ask	\$1,750,000
Baths	2
DOM	35



21-30 44 DR #6F

Type	Condo	Status	Contract
SqFt	1,005	Beds	2
PPSF	\$1,722	Fees	\$2,297

Hunters Point

Ask	\$1,730,000
Baths	2
DOM	N/A



134-38 57TH AVE

Type	Townhouse	Status	Contract
SqFt	2,392	Beds	4
PPSF	\$710	Fees	\$838

Queensboro Hill

Ask	\$1,698,000
Baths	2
DOM	83



28-41 215TH ST

Type	Townhouse	Status	Contract
SqFt	2,450	Beds	4
PPSF	\$673	Fees	\$1,078

Bayside

Ask	\$1,650,000
Baths	2
DOM	68

Compass is a licensed real estate broker and abides by Equal Housing Opportunity laws. All material presented herein is intended for informational purposes only. Information is compiled from sources deemed reliable but is subject to errors, omissions, changes in price, condition, sale, or withdrawal without notice. No statement is made as to the accuracy of any description. All measurements and square footages are approximate. This is not intended to solicit property already listed. Nothing herein shall be construed as legal, accounting or other professional advice outside the realm of real estate brokerage.



162-16 76TH AVE

Type	Townhouse	Status	Contract
Sqft	1,768	Beds	6
PPSF	\$899	Fees	\$596

Hillcrest

Ask	\$1,590,000
Baths	4.5
DOM	88

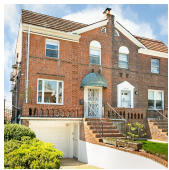


5-17 47TH RD #1A

Type	Condo	Status	Contract
Sqft	1,177	Beds	3
PPSF	\$1,330	Fees	\$1,593

Long Island City

Ask	\$1,565,000
Baths	2
DOM	34



68-34 EXETER ST

Type	Townhouse	Status	Contract
Sqft	1,950	Beds	3
PPSF	\$753	Fees	\$920

Forest Hills

Ask	\$1,468,000
Baths	3.5
DOM	43

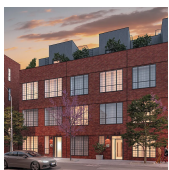


62-11 83RD ST

Type	Townhouse	Status	Contract
Sqft	N/A	Beds	5
PPSF	N/A	Fees	\$551

Middle Village

Ask	\$1,438,000
Baths	2.5
DOM	481

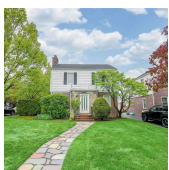


5-15 47TH RD #3B

Type	Condo	Status	Contract
Sqft	1,076	Beds	2
PPSF	\$1,334	Fees	\$1,462

Hunters Point

Ask	\$1,435,000
Baths	2
DOM	33



220-27 43RD AVE

Type	Townhouse	Status	Contract
Sqft	1,645	Beds	4
PPSF	\$851	Fees	\$912

Bayside

Ask	\$1,400,000
Baths	2
DOM	38

Compass is a licensed real estate broker and abides by Equal Housing Opportunity laws. All material presented herein is intended for informational purposes only. Information is compiled from sources deemed reliable but is subject to errors, omissions, changes in price, condition, sale, or withdrawal without notice. No statement is made as to the accuracy of any description. All measurements and square footages are approximate. This is not intended to solicit property already listed. Nothing herein shall be construed as legal, accounting or other professional advice outside the realm of real estate brokerage.



24-12 42ND RD #4C

Hunters Point

Type	Condo	Status	Contract	Ask	\$1,395,000
Sqft	927	Beds	2	Baths	2
PPSF	\$1,505	Fees	\$609	DOM	8



19-15 21ST DR

Astoria

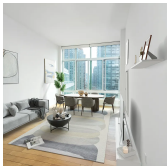
Type	Townhouse	Status	Contract	Ask	\$1,339,000
Sqft	N/A	Beds	4	Baths	2.5
PPSF	N/A	Fees	N/A	DOM	42



47-20 HANFORD ST

Douglaston

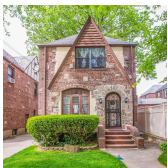
Type	Townhouse	Status	Contract	Ask	\$1,295,000
Sqft	2,769	Beds	4	Baths	2
PPSF	\$468	Fees	\$1,058	DOM	215



46-30 CENTER BLVD #1607

Hunters Point

Type	Condo	Status	Contract	Ask	\$1,290,000
Sqft	746	Beds	1	Baths	1
PPSF	\$1,730	Fees	\$949	DOM	42



161-35 28TH AVE

Flushing

Type	Townhouse	Status	Contract	Ask	\$1,288,000
Sqft	1,830	Beds	4	Baths	2.5
PPSF	\$704	Fees	\$735	DOM	19

Compass is a licensed real estate broker and abides by Equal Housing Opportunity laws. All material presented herein is intended for informational purposes only. Information is compiled from sources deemed reliable but is subject to errors, omissions, changes in price, condition, sale, or withdrawal without notice. No statement is made as to the accuracy of any description. All measurements and square footages are approximate. This is not intended to solicit property already listed. Nothing herein shall be construed as legal, accounting or other professional advice outside the realm of real estate brokerage.